



Lite
Model

Event-based vision camera

SilkyEvCam HD_{Lite}

SilkyEvCam HD Lite is an industrial-grade event-based vision camera with Sony's IMX636 event-based vision sensor which is realized in collaboration between Sony and PROPHESSEE. It delivers HD resolution while maintaining the same dimensions as previous VGA models. Built on a completely different concept than conventional frame-based cameras, SilkyEvCam HD Lite reveals an unprecedented event-based world.

1 μ sec

>120dB

1/10~1/1000

1280 x 720

Min temporal resolution

Dynamic range

Data volume compared
to frame-based camera

Resolution

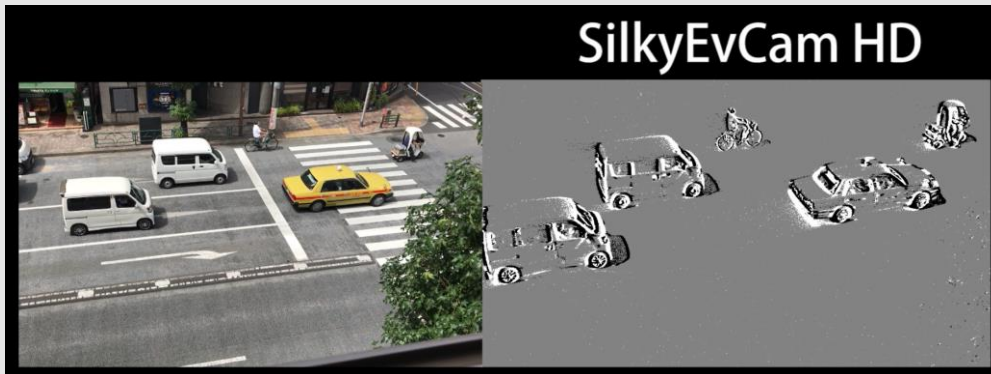
An event-based vision sensor is designed to emulate how the human eye senses light. The sensor detects the luminance changes in each pixel and extracts only those that exceed the preset threshold value then outputs the event "coordinate, polarity, and time". This operation is performed independently and asynchronously for each pixel.

Differences from conventional cameras

While conventional cameras output information for the entire screen according to a fixed frame rate, event-based vision cameras output asynchronously data only for pixels that have undergone a change in brightness or darkness. Therefore, it does not output motionless (no luminance change) roads, buildings, or stationary cars, and can reliably capture only moving objects.

Conventional camera ▽

Event-based vision cameras ▽



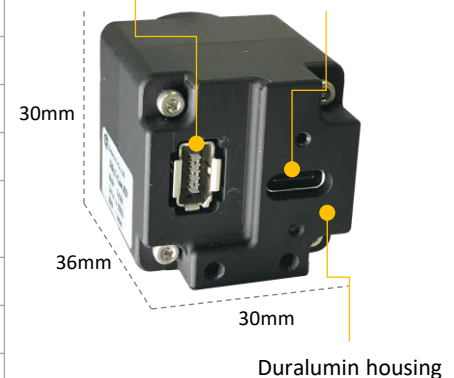
Check the video here!

SilkyEvCam HD Lite

| | | |
|---------------------------|---------------------------------|--|
| Event-based vision sensor | Model | IMX646 (Sony) |
| | Image size | Type 1/2.5" (Diagonal 7.14mm) |
| | Resolution | HD (1280(H) x 720(V)) |
| | Pixel size | 4.86μm x 4.86μm |
| | Typical Latency | 800μs or under @ 1k lux |
| | Readout throughput | 20Mevents/s (default, setting changeable) |
| Output | USB 3.0 (USB Type-C™ connector) | |
| | Interface | IX Series Connector (IX80G-B-10P : HIROSE) (Plug: IX30G-B-10S-CV(7.0) IX31G-B-10S-CV(7.0)) |
| Camera | Power supply | USB Power (VBUS) 5V |
| | Lens mount type | C/CS Mount |
| | Dynamic range | > 120dB (DR > 120 dB can be reached based on low light cutoff measurement being: 0.08 lux (imaging characteristics not guaranteed).) |
| | Operating temperature | 0 ~ + 50 °C |
| | Storage temperature | - 30 ~ + 80 °C |
| | Current consumption | 300mA (max) / 100mA (Ave.) |
| | Dimensions / Weight | 30mm (W) x 30mm (H) x 36mm (D) / 42g |
| | Raw formats | EVT3 |

IX Series Connector
SYNC_I/O TRIG_IN

USB Type-C™ connector
with lock screw



BUILT TO ENDURE

Change of temperature: IEC 60068-2-14

Damp heat, steady state: IEC 60068-2-78

Rough handling shocks: IEC 60068-2-31

Electrostatic discharge immunity test:

IEC 61000-4-2

Software toolkit

"Metavision® SDK ", a software toolkit provided by PROPHESSEE can be used for this product. The Metavision® SDK provides basic libraries, algorithms, and practical sample programs for processing data from event-based vision cameras. (The Metavision® SDK is free of charge up to and including Ver. 4.6.x. From Ver. 5.x.x onwards, it will be available for a fee.)



※The names of companies and products mentioned in this document are registered trademarks or trademarks of the respective companies and organizations.
※ Standards and other information in this document are subject to change without notice.

2024.12

